

Алматы (7273)495-231
Ангарск (3955)60-70-56
Архангельск (8182)63-90-72
Астрахань (8512)99-46-04
Барнаул (3852)73-04-60
Белгород (4722)40-23-64
Благовещенск (4162)22-76-07
Брянск (4832)59-03-52
Владивосток (423)249-28-31
Владикавказ (8672)28-90-48
Владимир (4922)49-43-18
Волгоград (844)278-03-48
Вологда (8172)26-41-59
Воронеж (473)204-51-73
Екатеринбург (343)384-55-89
Иваново (4932)77-34-06
Ижевск (3412)26-03-58
Иркутск (395)279-98-46
Казань (843)206-01-48

Калининград (4012)72-03-81
Калуга (4842)92-23-67
Кемерово (3842)65-04-62
Киров (8332)68-02-04
Коломна (4966)23-41-49
Кострома (4942)77-07-48
Краснодар (861)203-40-90
Красноярск (391)204-63-61
Курган (3522)50-90-47
Курск (4712)77-13-04
Липецк (4742)52-20-81
Магнитогорск (3519)55-03-13
Москва (495)268-04-70
Мурманск (8152)59-64-93
Набережные Челны (8552)20-53-41
Нижний Новгород (831)429-08-12
Новокузнецк (3843)20-46-81
Новосибирск (383)227-86-73
Ноябрьск (3496)41-32-12

Омск (3812)21-46-40
Орел (4862)44-53-42
Оренбург (3532)37-68-04
Пенза (8412)22-31-16
Пермь (342)205-81-47
Петрозаводск (8142)55-98-37
Псков (8112)59-10-37
Ростов-на-Дону (863)308-18-15
Рязань (4912)46-61-64
Самара (846)206-03-16
Санкт-Петербург (812)309-46-40
Саранск (8342)22-96-24
Саратов (845)249-38-78
Севастополь (8692)22-31-93
Симферополь (3652)67-13-56
Смоленск (4812)29-41-54
Сочи (862)225-72-31
Ставрополь (8652)20-65-13
Сургут (3462)77-98-35

Сыктывкар (8212)25-95-17
Тамбов (4752)50-40-97
Тверь (4822)63-31-35
Тольятти (8482)63-91-07
Томск (3822)98-41-53
Тула (4872)33-79-87
Тюмень (3452)66-21-18
Улан-Удэ (3012)59-97-51
Ульяновск (8422)24-23-59
Уфа (347)229-48-12
Хабаровск (4212)92-98-04
Чебоксары (8352)28-53-07
Челябинск (351)202-03-61
Череповец (8202)49-02-64
Чита (3022)38-34-83
Якутск (4112)23-90-97
Ярославль (4852)69-52-93

Россия +7(495)268-04-70

Казахстан +7(7172)727-132

Киргизия +996(312)96-26-47

<https://tecfluid.nt-rt.ru> || tdf@nt-rt.ru

Датчики и трансмиттеры серии ИВТ-32

 **tecfluid**

Level indicators IBT PVC 32



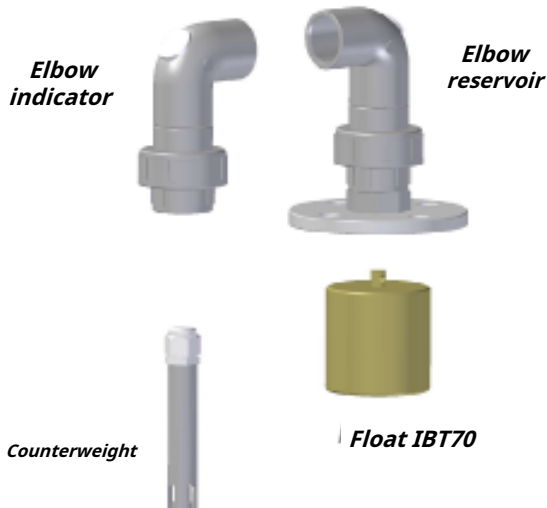
Level indicator pulley system, float and counterweight for liquids

- Simple and economical device, tube $\varnothing 32$
- Practically suitable for all liquids, charged or aggressive
- No risk of leaks
- Excellent chemical resistance
- Measuring range: up to 5m.
- Connections:
 - PVC flange $\varnothing 120$, other dimensions on request
 - Connections to glue, tube and between PVC elbows
- Materials :
 - Pulleys: PVC
 - Float: PP, other materials on request
 - Counterweight - exterior indicator: PVC
- Local indication by external counterweight
- Options:
 - Automation
 - 4-20mA transmitter
 - Remote indicator MT03L



With potential free contacts (BPCB 32) and/or capacitive sensors (SCET)

With transmitter magnetic level (TMN/TMR)



Principle of operation

A PVC counterweight is connected by a cable to a PP, PVC, PVDF or INOX-316 float which moves by means of a system of protected pulleys and externally indicates the level of the tank. Level variations inside the tank move the float which transmits its position to the external counterweight.

The float is always immersed in the liquid to be measured. A magnet inside the counterweight activates alarm contacts and a 4-20 mA signal transmitter.

Apps

- **Water treatment**
- **Chemicals and petrochemical industry**
- Stationery store
- **Automobile industry**

Technical characteristics

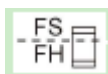
- **Connections:**By PVC flange $\varnothing 120$ mm
- **Measuring range :**5m. maxi (with transparent PVC sleeves)
- **Closing cap:**PVC
- **Tube :**PVC $\varnothing 32$ mm.
- **Working pressure:**Atmospheric
- **Liquid temperature:** - 10°C ... +60°C
- **Protection:**IP20

Types of counterweight and float

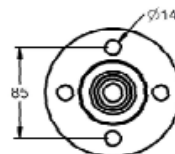
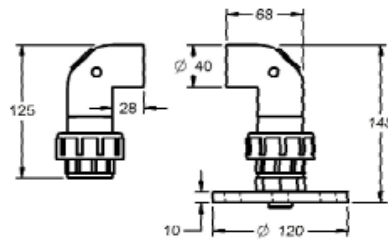
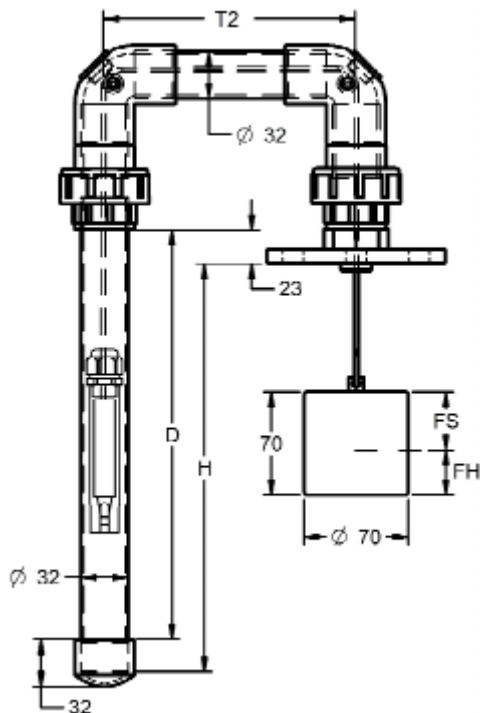
Reference	CBBP 32	NS
Dimensions	$\varnothing 25 \times 85$ mm	$\varnothing 20 \times 124$ mm
Materials	Gray PVC	PP gray
Function	Counterweight magnetic indicator BPCBA-32 (see page 3)	Counterweight indicator unmagnetized



Float	[IBT70]: Cylindrical $\varnothing 70 \times 70$ mm., PP. Other materials, consult.
Density (g/cm ³)	e > 0.59
Temperature (°C)	- 10..+80°C
FS/FH (mm)	40 / 30

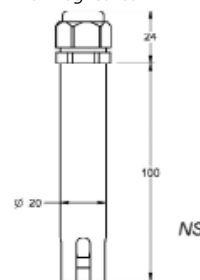


Dimensions



Counterweight indicator magnetic

Counterweight indicator unmagnetized



Elbow Indicator

Dimensions Matter 90° elbow. $\varnothing 40 \times 125$ mm
PVC
Assembly by PVC union

Elbow reservoir

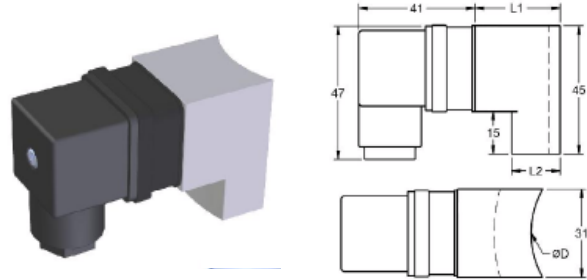
Dimensions Matter 90° elbow. $\varnothing 40 \times 148$ mm
PVC
Assembly by PVC flange $\varnothing 120$ mm

Automation

Potential-free reed contact BPCB 32

Bistable contact for level detection. The activation of the contact is done by the magnetic field of the float, the contact memorizes the switching state when the float reaches the contact setting position.

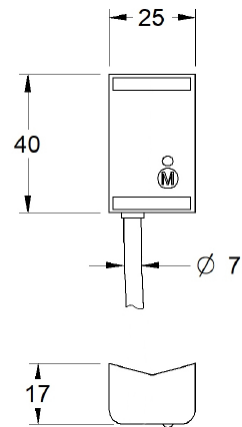
- Bistable reed switch 40W/VA-2A/230VAC
- Type of contact: NO or NC depending on mounting position
- Electrical connection: DIN 43650 connector
- Working temperature: 60°C
- Protection: IP65



Capacitive sensor SCET

Bistable contact for level detection. The output remains activated when liquid is detected and deactivated without the presence of liquid.

- Power supply: 6 .. 30 Vdc, 0.6 mA (OFF)
- Output: Current switch, 2-wire
- Switching current: 3.3 .. 40 mA
- Tank wall thickness (max.): Conductive liquids: 8 mm
Non-conductive liquids: 3 mm
- Working temperature: -20°C .. +80°C
- Protection: IP67
- Dimensions: 25 x 40 x 17mm
- Weight: 60 g, approximately cable included
- Adjustment method: By means of a magnetic pencil LM-8 Ø8 x 50 mm.
- Status indication: Front LED



Magnetic Level Transmitter TMN 300

BP INOX:4-20mA output TMR BP

STAINLESS STEEL:Resistive output

Composed by a resistive sensor based on a chain of reeds and resistors, mounted on a printed circuit inside the guide tube. Without contact with the liquid to be measured.

Tank level variations move the external counterweight CBBP32, which by means of magnetic coupling activates the resistive sensor, varying the resistance corresponding to the measured level value.

These resistance variations are processed by an electronic converter, which delivers a 0...4-20 mA current signal proportional to the level of the liquid.

- Step of measurement 10 mm
- Head-mounted converter
- Output 4-20 mA, 2 wires (TMN 300 BP)
- Resistance output $R\Omega$ (TMR BP)
- Power supply 10 .. 35 Vdc
- IP-67 PTB enclosure
- Lateral mounting on level indicator by stainless steel collar



DSMS Amplifier Relay

- DIN rail mounting
- 2 independent inputs (reed contact)
- 2 5A/250V changeover contact outputs
- Green LEDs (1) Power supply voltage. + red (2) output status
- Wide choice of supply voltages 24 / 110 / 230 / 400 VAC - 24 Vdc



Electronic converter MT-03L

- Fully programmable, graphic LCD display
- 5-digit Level Indication
- 96 x 96 x 78 mm (panel)
- 2 configurable relay outputs
- 4-20mA output
- Resistance or current input 4-20 mA
- Loop power supply: 16...25 VDC / 4...20 mA



Accessories

PVC pipe		<ul style="list-style-type: none"> • Tube ø32 mm • Clear PVC • Supplied in lengths of 1 and 2 m with sleeve
Necklace		<ul style="list-style-type: none"> • Support collar for ø32 mm tube • Black PE • It is recommended to use at least 2 pieces
Muff		<ul style="list-style-type: none"> • Junction sleeve for transparent PVC tube ø32 • Increases overall length by 3mm
Cork lower		<ul style="list-style-type: none"> • lower plug for ø32 mm tube • Gray PVC
PP-cable ø3mm		<ul style="list-style-type: none"> • Cable, Ø1.5mm • PP
Cable ties ø2mm		<ul style="list-style-type: none"> • Stainless steel cable ties Ø2 mm for stainless steel cable 1.5

SAJ 3-threshold relay with fully configurable LCD display, 15VDC power supply for 4 - 20 mA current loop.

- Space-saving housing, 35 mm DIN rail mounting
- 3 adjustable thresholds
- LCD display
- Connection for communication: RS232 - RS485
- Wide choice of supply voltage 24 / 110 / 220 / 400 VAC



Composition of the reference

Indicate dimensions H and T2, as well as the corresponding parts required.

Automatisms must be added separately.

* Standard

IBT PVC 32 /	<input type="text"/>	H	<input type="text"/>	/	<input type="text"/>
Float IBT 70	PP	*			
	STAINLESS STEEL				
	PVDF				
Total Height (H)	(mm)				
Separation distance (T2) (mm)					

To compose the reference, select an option in each of the columns. Example :**IBT PVC 32 / PPH 2000 / 400**



По вопросам продаж и поддержки обращайтесь:

Алматы (7273)495-231
Ангарск (3955)60-70-56
Архангельск (8182)63-90-72
Астрахань (8512)99-46-04
Барнаул (3852)73-04-60
Белгород (4722)40-23-64
Благовещенск (4162)22-76-07
Брянск (4832)59-03-52
Владивосток (423)249-28-31
Владикавказ (8672)28-90-48
Владимир (4922)49-43-18
Волгоград (844)278-03-48
Вологда (8172)26-41-59
Воронеж (473)204-51-73
Екатеринбург (343)384-55-89
Иваново (4932)77-34-06
Ижевск (3412)26-03-58
Иркутск (395)279-98-46
Казань (843)206-01-48

Калининград (4012)72-03-81
Калуга (4842)92-23-67
Кемерово (3842)65-04-62
Киров (8332)68-02-04
Коломна (4966)23-41-49
Кострома (4942)77-07-48
Краснодар (861)203-40-90
Красноярск (391)204-63-61
Курган (3522)50-90-47
Курск (4712)77-13-04
Липецк (4742)52-20-81
Магнитогорск (3519)55-03-13
Москва (495)268-04-70
Мурманск (8152)59-64-93
Набережные Челны (8552)20-53-41
Нижний Новгород (831)429-08-12
Новокузнецк (3843)20-46-81
Новосибирск (383)227-86-73
Ноябрьск (3496)41-32-12

Омск (3812)21-46-40
Орел (4862)44-53-42
Оренбург (3532)37-68-04
Пенза (8412)22-31-16
Пермь (342)205-81-47
Петрозаводск (8142)55-98-37
Псков (8112)59-10-37
Ростов-на-Дону (863)308-18-15
Рязань (4912)46-61-64
Самара (846)206-03-16
Санкт-Петербург (812)309-46-40
Саранск (8342)22-96-24
Саратов (845)249-38-78
Севастополь (8692)22-31-93
Симферополь (3652)67-13-56
Смоленск (4812)29-41-54
Сочи (862)225-72-31
Ставрополь (8652)20-65-13
Сургут (3462)77-98-35

Сыктывкар (8212)25-95-17
Тамбов (4752)50-40-97
Тверь (4822)63-31-35
Тольятти (8482)63-91-07
Томск (3822)98-41-53
Тула (4872)33-79-87
Тюмень (3452)66-21-18
Улан-Удэ (3012)59-97-51
Ульяновск (8422)24-23-59
Уфа (347)229-48-12
Хабаровск (4212)92-98-04
Чебоксары (8352)28-53-07
Челябинск (351)202-03-61
Череповец (8202)49-02-64
Чита (3022)38-34-83
Якутск (4112)23-90-97
Ярославль (4852)69-52-93

Россия +7(495)268-04-70

Казахстан +7(7172)727-132

Киргизия +996(312)96-26-47

<https://tecfluid.nt-rt.ru> || tdf@nt-rt.ru